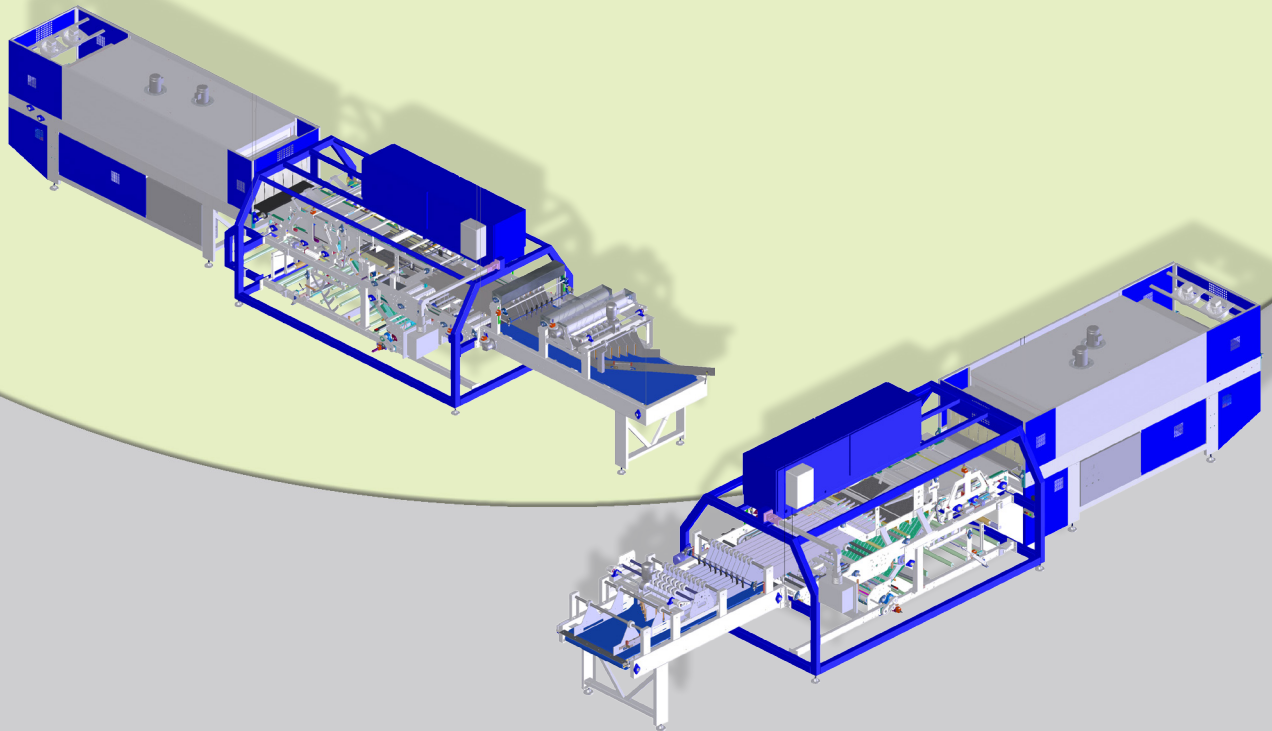


Shrink Bundling Lines

Shrink Bundling Line, only film, double-triple PACK feeding, two or three units (80-90 p/min) (140-150 p/min): Model ZAED + ZT-25 and ZAED + ZT-30.



OPERATION

Bundles and shrink wraps bottles, cans, jars, containers, etc.

- High production rate machine for natural springs or water bottling plants.
- Special for promotions of 3 or 2 units.
- Optional silk-screen printed film shrink wrapping, easy open system and/or multipack.

TECHNICAL FEATURES

Shrink wraps with polyethylene film.

Format changes are controlled with flywheels with built-in counters.

Electronic temperature control in the shrink wrap tunnel.

Manual controls and fully automatic operation.

Finger brake to separate the product in the requested formats.

Touch-screen used to adjust or add new formats.

Electric panel with built-in air-conditioning system.

Materiales de primera calidad: controlador servodriviers y servomotores BECKOFF, neumática FESTO, aparatos eléctricos TELEMECANIQUE.

PRODUCTS AND MARKET SECTORS

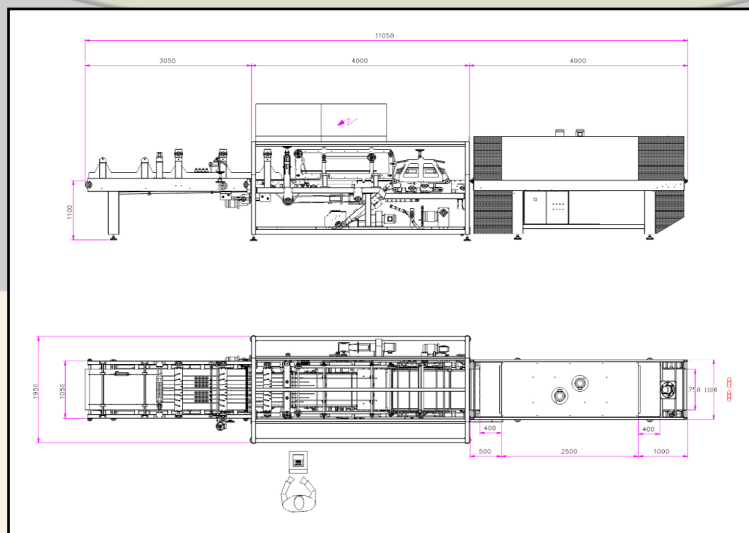
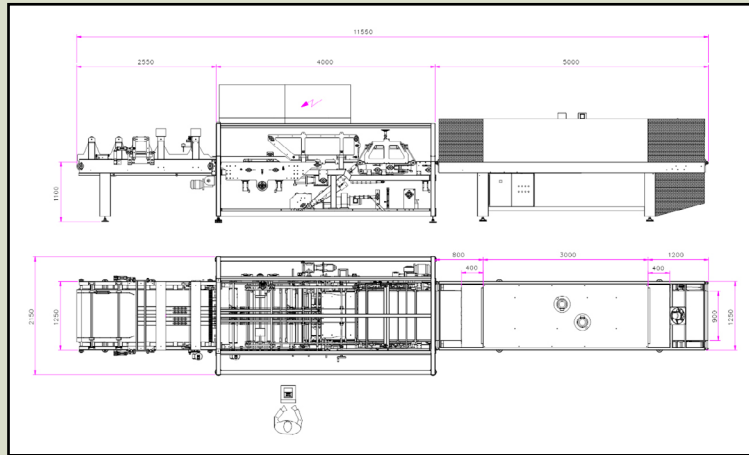
Food: Canned vegetables: corn, tomatoes, asparagus, olives, mushrooms, pickled foods, etc.

Drinks: Water, fruit juice, oil, dairy products, milk, soft drinks, milkshakes, soda water, energy drinks, alcoholic beverages, liquid yoghurt, beer, vinegar, sauces, chemist's blisters and containers, etc.



Shrink Bundling Lines

Shrink Bundling Line, only film, double-triple PACK feeding, two or three units (80-90 p/min) (140-150 p/min): Model ZAED + ZT-25 and ZAED + ZT-30.



Voltage	220v or 380v.
Total power	60 Kw.
Maximum width of the film reel	850 mm.
Total line weight	3.200 Kg.
Air consumption	100 l/min.
Air pressure	6 atm.
Film thickness	50-100 microns
Maximum production of 1.5 litre bottles in (3x2)x2	(40-45)x2 p/min.
Maximum Ø65 container production in (3x1)x3	(45-50)x3 p/min.



ZORPACK

Polígono Industrial Comarca-2, calle B, N° 20
 31191 Ezquiroz (Navarra)
 Tel.: +34 948 303 005
 Fax: +34 948 302 644
 E-mail: zorpack@zorpack.com
www.zorpack.com