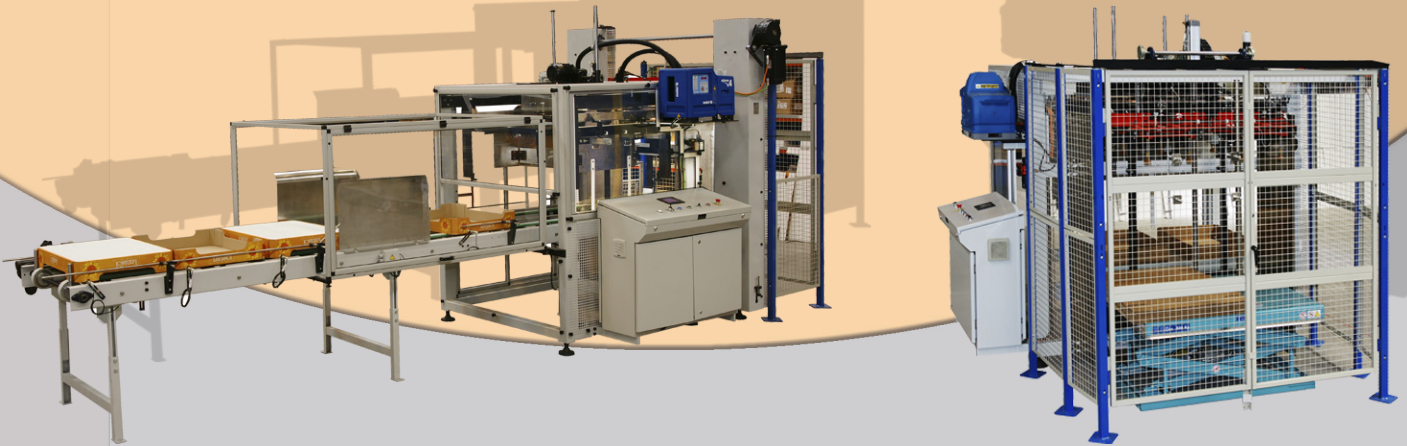


Tray Forming Machines

TRAY FORMING MACHINE, FULL PALLET and HALF PALLET size.

- ZFV-P Model + Turning machine.
- ZFV-P Model + Lifting table.



OPERATION

Forms **1200x800mm and/or 800x600mm** trays with flat cardboard sheets, applying hot glue to the four corners of the sheet. Specially designed to work on lines with a Robot that pre-bundles the format and positions it on the formed tray.

TECHNICAL FEATURES

Manual controls and fully automatic operation.

Touch-screen used to adjust or add new formats.

Electrical panel installed on a desk for easy accessibility.

Cardboard feeder used to position cardboard sheets horizontally.

Top quality materials: OMRON automation systems (optional - Siemens), FESTO pneumatic systems, TELEMECANIQUE electrical devices, MELER or MELTON gluing equipment.

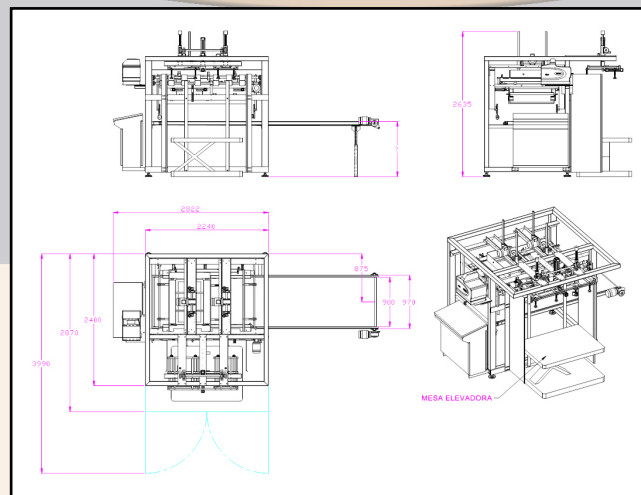
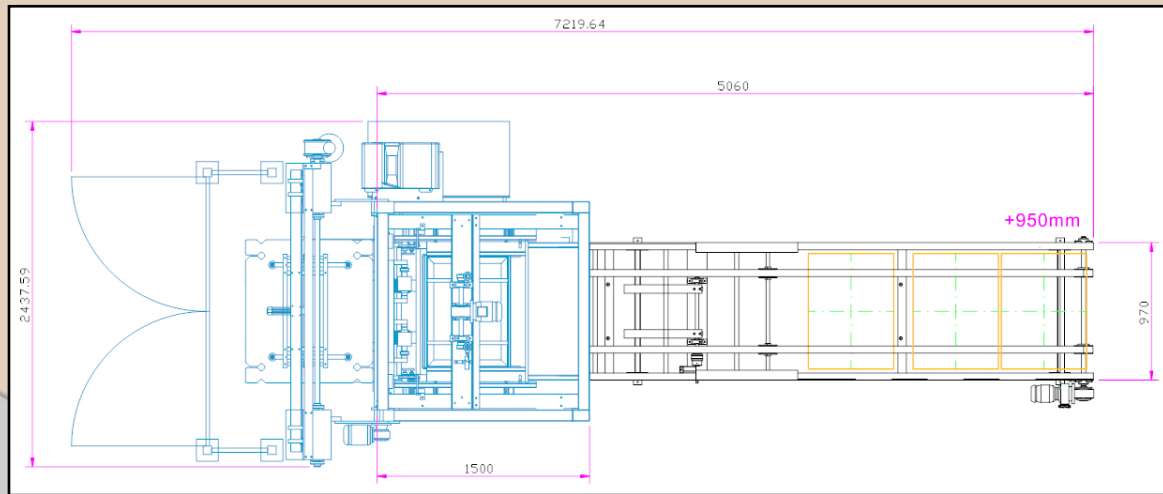
PRODUCTS AND MARKET SECTORS

Drinks: water, fruit juice, oil, dairy products, soft drinks, beer, sauces.

Tray Forming Machines

TRAY FORMING MACHINE, FULL PALLET and HALF PALLET size.

- ZFV-P Model + Turning machine.
- ZFV-P Model + Lifting table.



Voltage	220v or 380v
Maximum dimensions of the cardboard sheet	1427x1031mm.
Minimum dimensions of the cardboard sheet	1032x790mm.
Total power	5 Kw.
Total line weight	1.500 Kg.
Air consumption	100 l/min.
Air pressure	6 atm.
Production of half pallet trays	400-450 tph.
Production of full pallet trays	3-4 trays/minute.



ZORPACK

Polígono Industrial Comarca-2, calle B, Nº 20
 31191 Ezquiroz (Navarra)
 Tel.: +34 948 303 005
 Fax: +34 948 302 644
 E-mail: zorpack@zorpack.com
www.zorpack.com